

Mayer Steel Pipe Corp. Wu Ku Branch

Stainless-steel sheets and plates; stainless-steel cutting, surface processing, finishing, and film lamination; buying and selling of stainless steel

Mayer Steel Pipe Corp., established in 1959 as Taiwan's first specialized maker of stainless steel pipes, set up a wholly owned subsidiary Mei Kuan Metal Corp. in 2004 to engage in sales of steel plates, and then merged the subsidiary and renamed it Mayer Steel Pipe Corp. Wu Ku Branch in 2007 to simplify the investment framework, cut management costs, and enhance competitiveness.

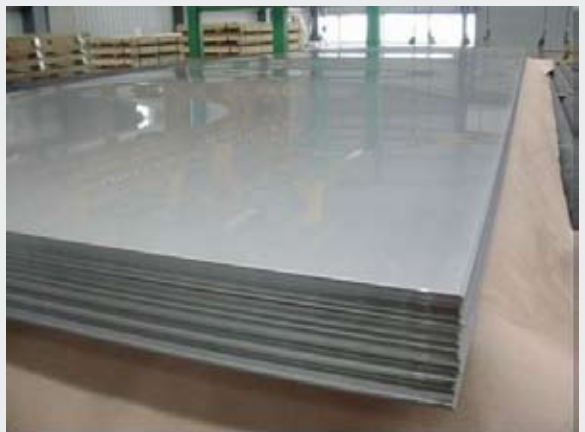
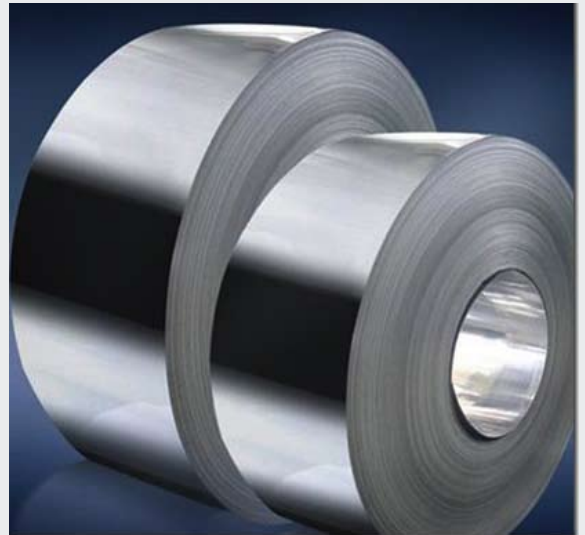
Sticking to a steady and practical management style with a rigid and conscientious attitude, the Wu Ku branch has been devoted to upgrading its service quality and boosting its business revenue. Furthermore, the branch's high-caliber employees carry out stringent quality control throughout to provide local and overseas customers with optimal products and services, so as to score continued sales growth along with the business success of customers.

Making a diverse range of stainless-steel sheets and plates, the company now has a monthly production of up to 3,000 tons. About 30% of the output is exported, and annual revenues amount to US\$40 million.

The company constantly upgrades its products and services in order to forge long-term partnerships with its clients. In addition to turning out all kinds of sheets and plates through cutting, surface processing, finishing, and film lamination, it also buys and sells all sorts of stainless steels.

Available in SS201, 202, 304, 304L, 316, 316L, and 430 materials, and being surface processed with HL, BA, No. 1, No. 2D, No. 2B, No. 3, and No. 4 techniques, the company's products offer excellent corrosion and heat resistance as well as ease of stamping, welding, cold rolling, and shaping (some do not even need heat treatment after welding), making them suitable for manufacturing daily necessities, mechanisms, wheel covers, kitchen utensils, sinks, building materials, healthcare equipment, tubing, chemical equipment, and many other applications.

To further expand its business in the global market, Mayer Steel Pipe Corp. Wu Ku Branch welcomes OEM, ODM, and custom orders.



Mayer Steel Pipe Corp. Wu Ku Branch

No. 120, Wugong Rd., Wugu Dist., New Taipei City,
Taiwan 248

Tel: 886-2-2299-1035

Fax: 886-2-2299-0432

E-mail: mayer.wkb@msa.hinet.net

Website: www.mayer-wkb.com.tw; www.mayer.com.tw