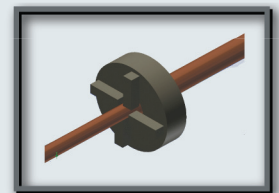
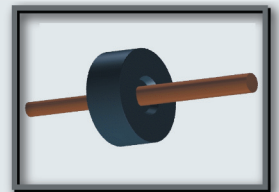
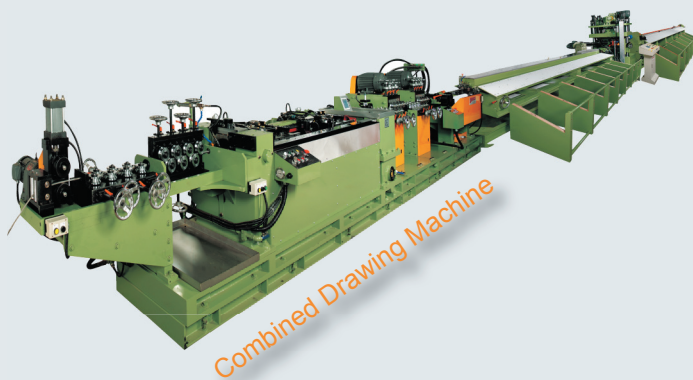


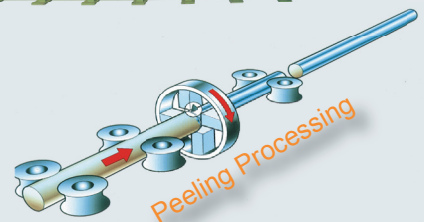
Sheng Chyeon Enterprise Co., Ltd.

Cold Draw Bar Equipment (Ferrous and Non Ferrous)

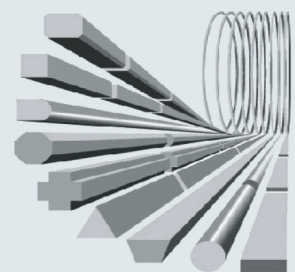
Founded in 1994 in Chuanhwa County, central Taiwan, Sheng Chyeon Enterprise Co. Ltd. started by supplying automation parts and providing machinery maintenance. With continuous efforts on upgrading production and R&D capability, the company is reputed as a trustworthy maker of bar-making machines globally, being ISO9001:2008 & CE-certified and marketing under its own "Sheng Chyeon" brand.



The company supplies a wide range of bar-making machines, including combined drawing machine, round bar peeling machine, straightening machine, flat rolling mill, chamfering machine, polishing machine etc. It has well-trained R&D engineers that welcome special requirements for custom-made products.



Sheng Chyeon adopts efficient mass-production processes to cut manufacturing costs and accelerate delivery, hence achieving quality-to-price ratios that are even comparable to German and Japanese counterparts. Besides self-developed manufacturing technologies, the company also introduces sophisticated technologies from abroad to keep up with global trends.



Irregular Bar Processing

Insisting on product value, easy maintenance, and prompt delivery, the company has built solid overseas footholds worldwide, having expanded from Taiwan to Germany, the U.S., Japan, China, Korea, and most of Southeast Asia.



Sheng Chyeon Enterprise Co., Ltd.

NO. 217-1, Yu-Pu Rd., Yu-Pu Village, Hsienhsi, Changhua 507, Taiwan

Tel: 886-4-758-8533

Fax: 886-4-758-8500

E-mail: tw.sc@msa.hinet.net

Website: www.tw-sc.com.tw